

Office Space For Lease

611 W. Civic Center Dr. Santa Ana, CA 92701



Entire 3rd and 4th Floor Available

Property Highlights:

- 3,154 - 8,186 SF available
- Directly across from the OC Courthouse
- Ground floor specialty coffee amenities
- Covered parking available
- Fiber-optic cable in building
- Elevator served
- Ready for immediate occupancy
- Flexible lease terms available
- Ideal for legal and professional services
- Private rooftop patio
- Updated lobby



Leasing contacts:

William Hugron CCIM, SIOR
(714) 356-7823
william@ashwillassociates.com
DRE# 00803524 Corp.DRE# 01291393

Justin Hugron
(714) 642-7690
justin@ashwillassociates.com
DRE# 00803524 Corp.DRE# 01291393

Ashwill
Associates
COMMERCIAL REAL ESTATE

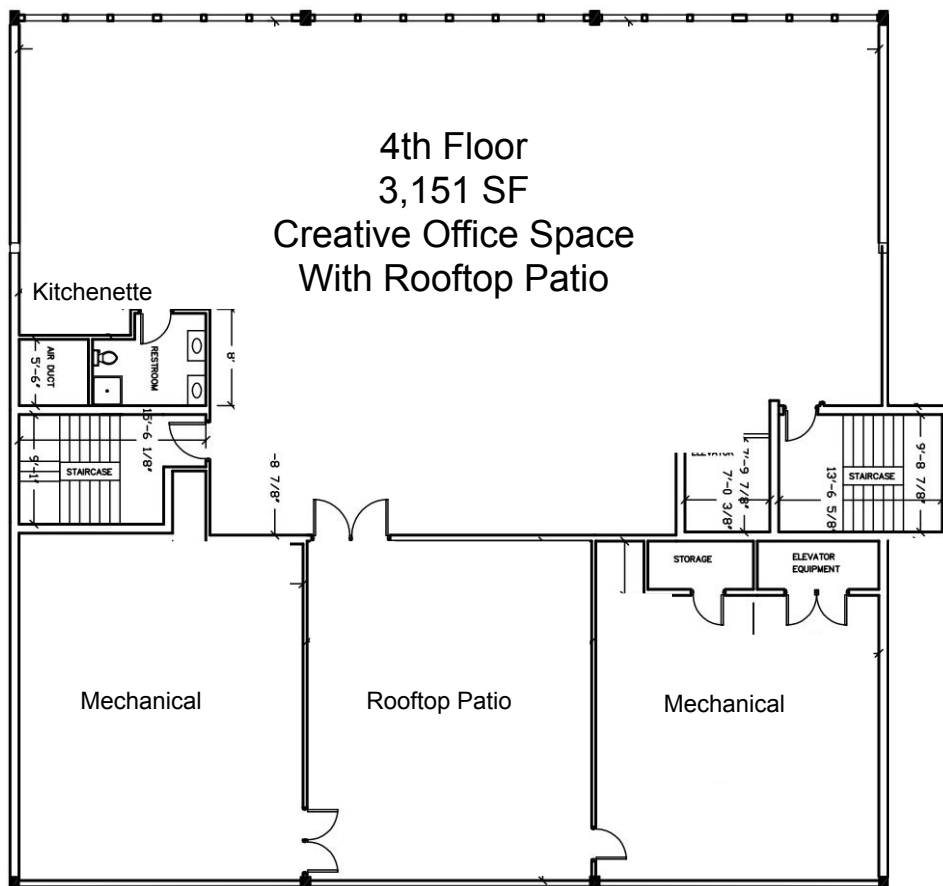
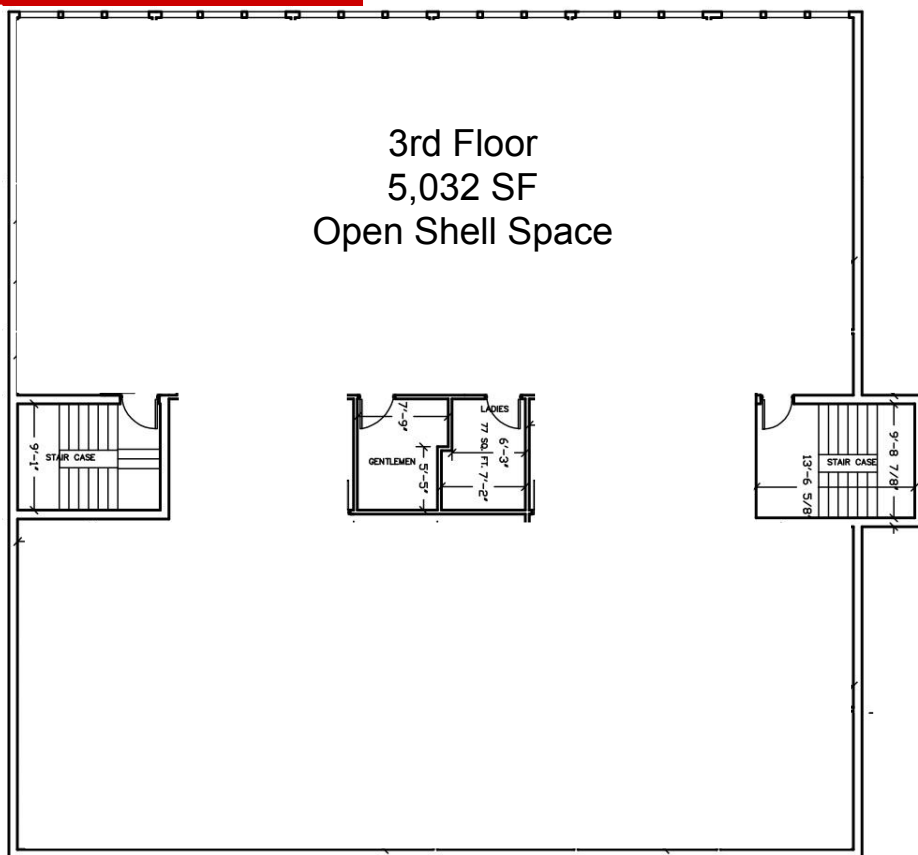
Photos and Amenities



Suite Highlights

- Remodeled 'open concept' create office
- Brand new kitchenette
- Private rooftop patio
- Secure elevator access
- Updated restroom with shower
- Ideal for creative office uses
- Ready for immediate occupancy
- Flexible lease terms available

Floor Plans



Photos



For more info, or to tour:

William Hugron CCIM, SIOR
(714) 356-7823
william@ashwillassociates.com
DRE# 00803524 Corp.DRE# 01291393

Justin Hugron
(714) 642-7690
justin@ashwillassociates.com
DRE# 00803524 Corp.DRE# 01291393

Ashwill
Associates
COMMERCIAL REAL ESTATE

The information contained herein has not been verified by real estate brokers. Although we have no reason to doubt its accuracy, we do not guarantee it. Buyers and tenant should verify information independently.