

Executive Suites Available

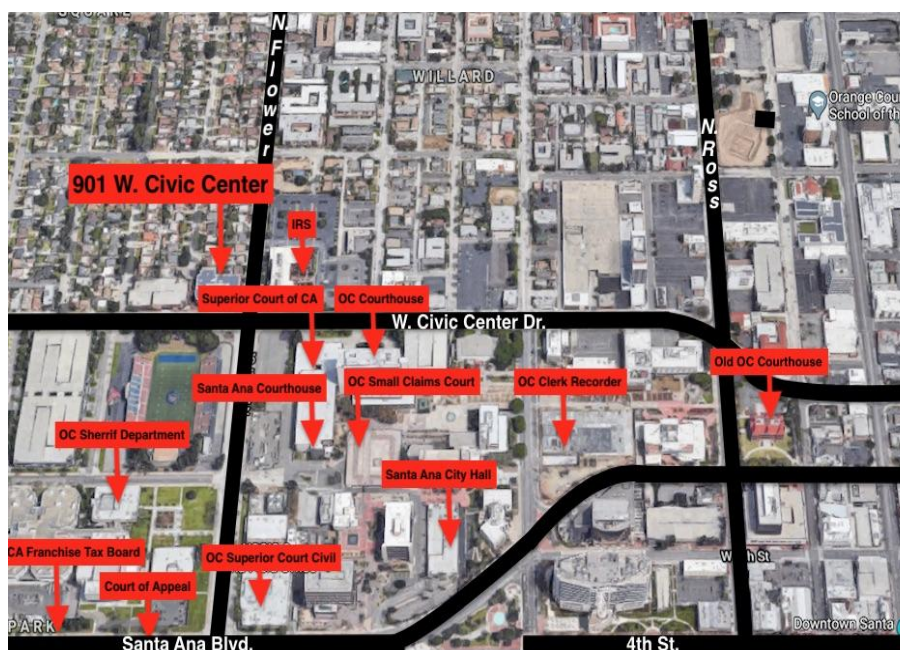
901 W. Civic Center Dr. Santa Ana, CA 92703



Santa Ana Corporate Office Center

Property Highlights:

- Prime location across from the OC Courthouse
- Includes phone, internet, utilities & janitorial
- Ground floor coffee/deli amenities on site
- Secure and covered parking structure
- Direct access from 2nd floor parking
- Receptionist to greet clients/answer phone
- Highly improved office suites
- Elevator served
- Tranquil courtyard
- Gym/personal trainer on first floor
- Full kitchen with high-end appliances
- Furnished offices
- Access to conference rooms
- Ready for immediate occupancy
- Ideal for legal and professional services
- Virtual tour on [YouTube](https://www.youtube.com/watch?v=901civiccenter): search 901 W. Civic Center
- www.901civiccenter.com for more info



Leasing contacts:

William Hugron CCIM, SIOR

(714) 356-7823

william@ashwillassociates.com

DRE# 00803524 Corp.DRE# 01291393

Justin Hugron

(714) 642-7690

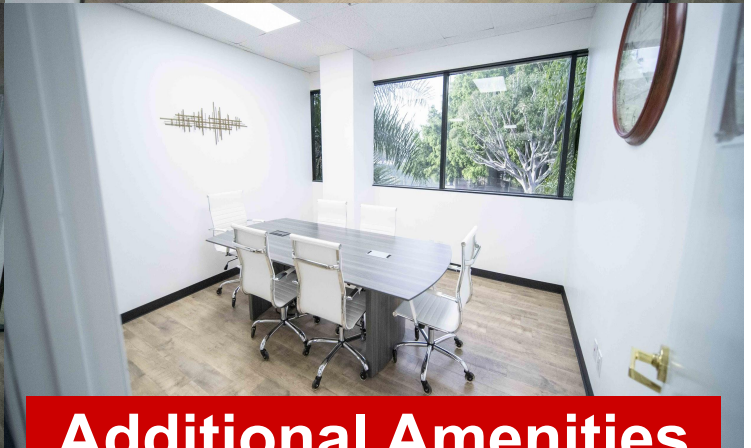
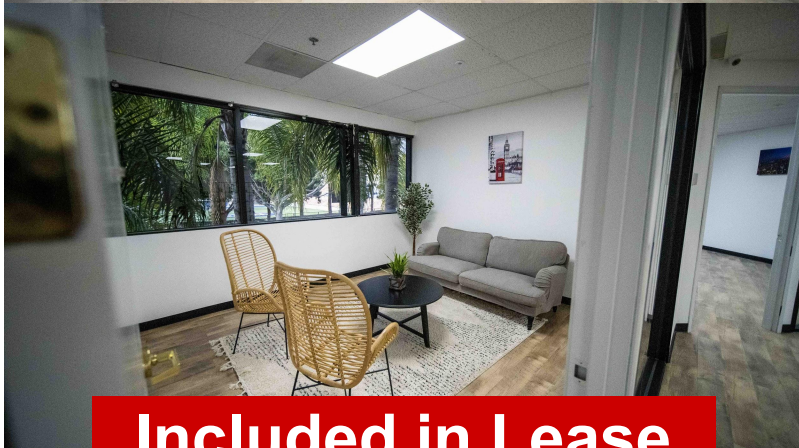
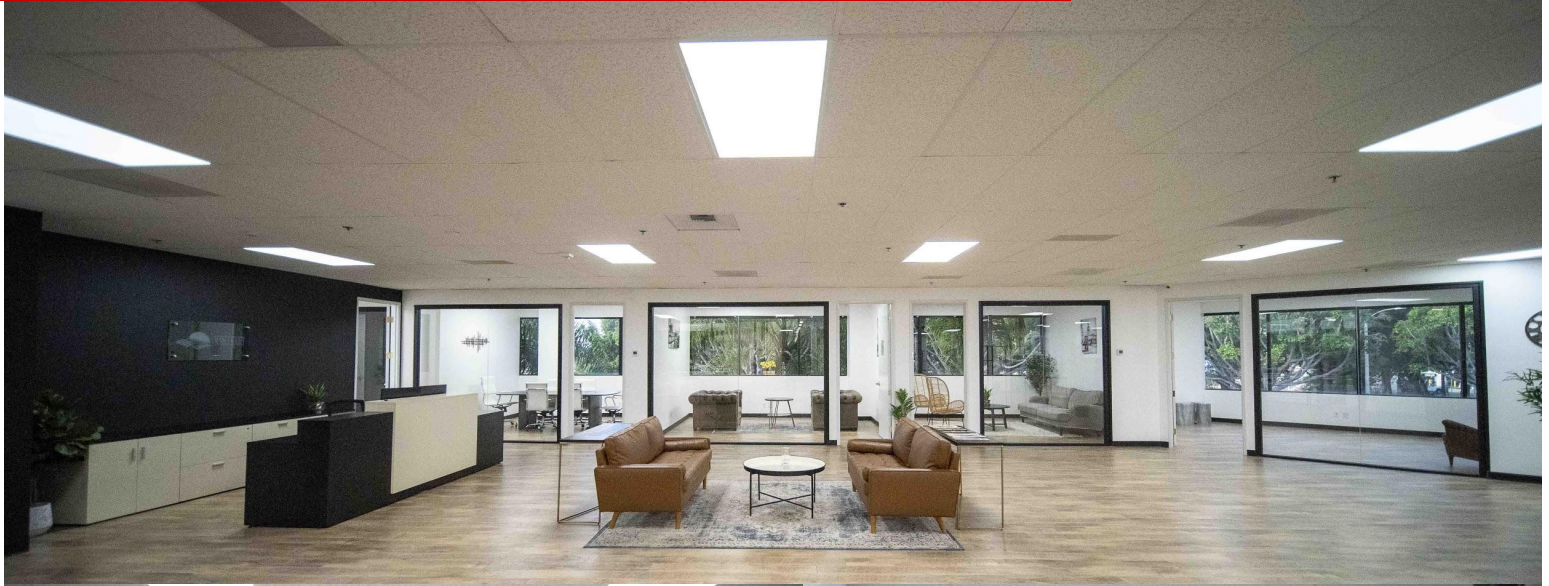
justin@ashwillassociates.com

DRE# 02069980 Corp.DRE# 01291393

**Ashwill
Associates**
COMMERCIAL REAL ESTATE

Amenities

& add on professional services available



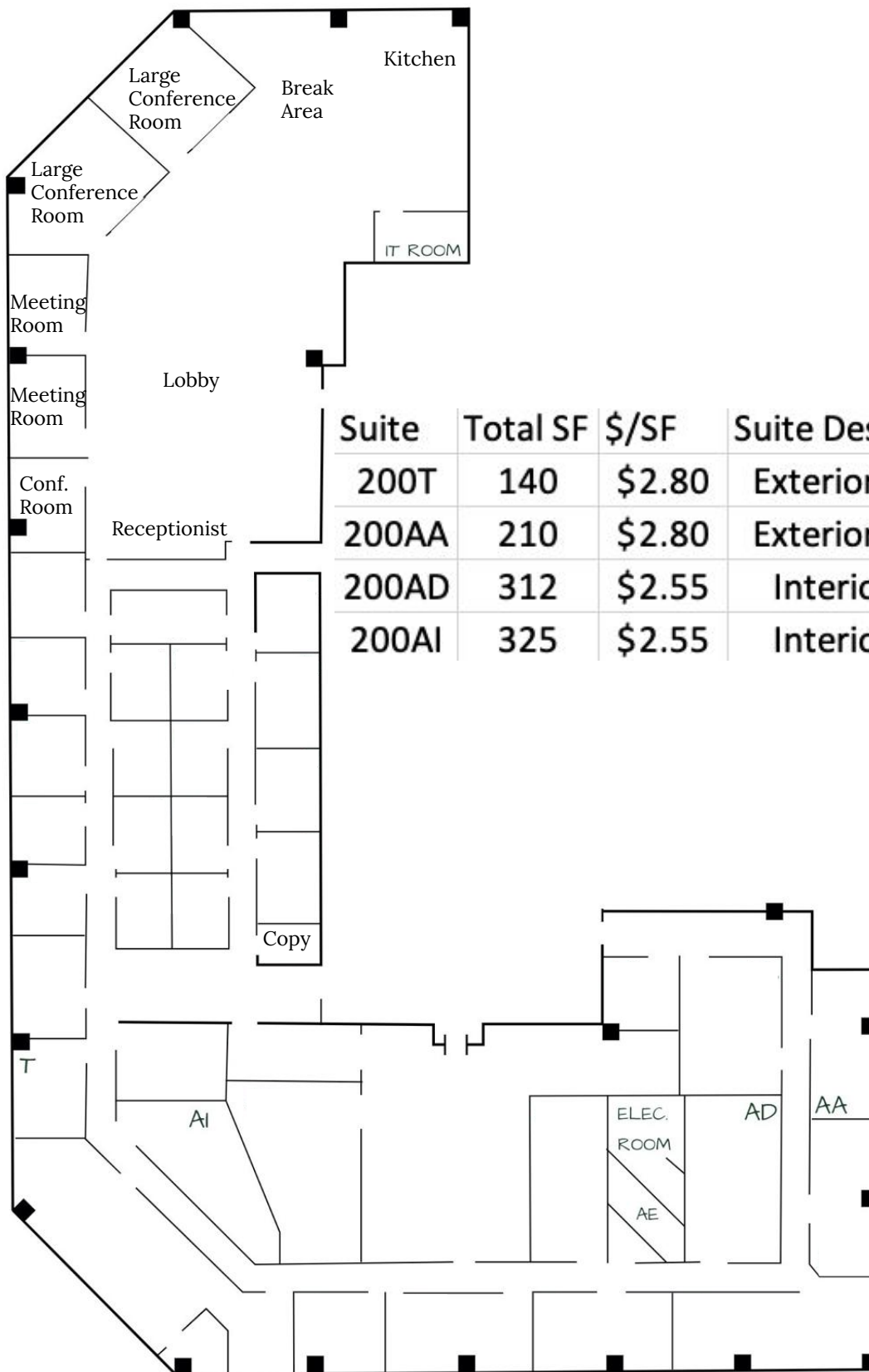
Included in Lease

- Fully furnished offices
- Receptionist
- Mail and package handling
- High speed Internet and phone
- Cleaning/janitorial services
- Mailing address

Additional Amenities

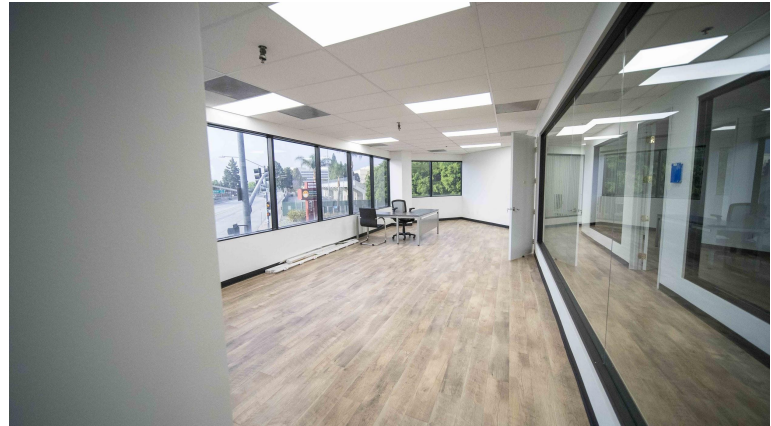
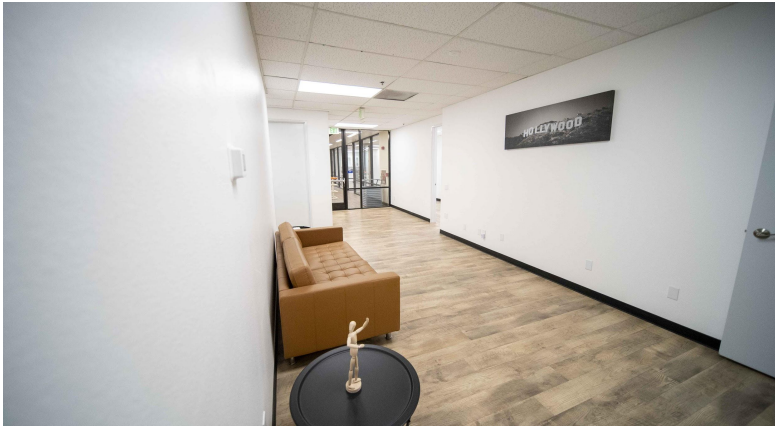
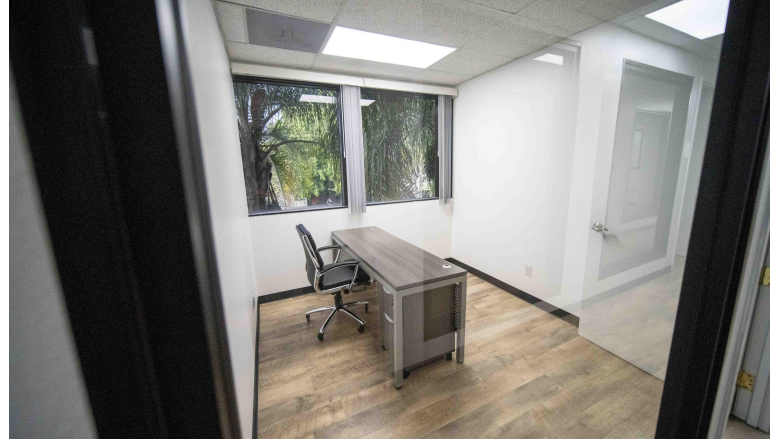
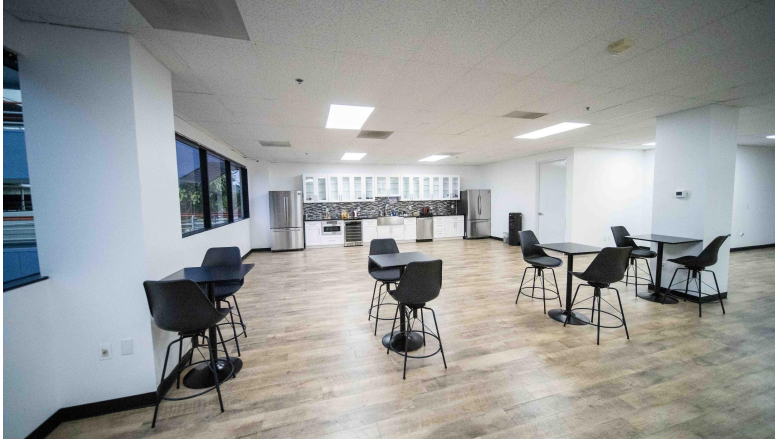
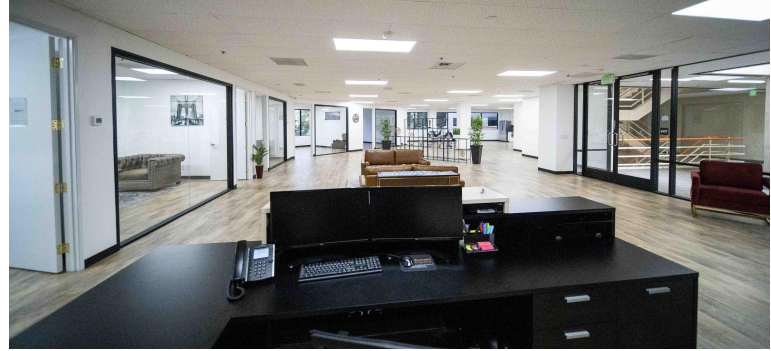
- Monthly parking: \$50
- Printing/copying: \$5
- Conference room usage (4x/month): \$40
- Kitchen/fresh fruit, snacks, coffee, water: \$35

Floor Plan & Availability



Suite	Total SF	\$/SF	Suite Description	Monthly Rent
200T	140	\$2.80	Exterior Window	\$ 392
200AA	210	\$2.80	Exterior Window	\$ 588
200AD	312	\$2.55	Interior Space	\$ 796
200AI	325	\$2.55	Interior Space	\$ 829

Executive Suite Photos



For more info, or to tour:

William Hugron CCIM, SIOR
(714) 356-7823
william@ashwillassociates.com
DRE# 00803524 Corp.DRE# 01291393

Justin Hugron
(714) 642-7690
Justin@ashwillassociates.com
DRE# 02069980 Corp.DRE# 01291393



Ashwill
Associates
COMMERCIAL REAL ESTATE