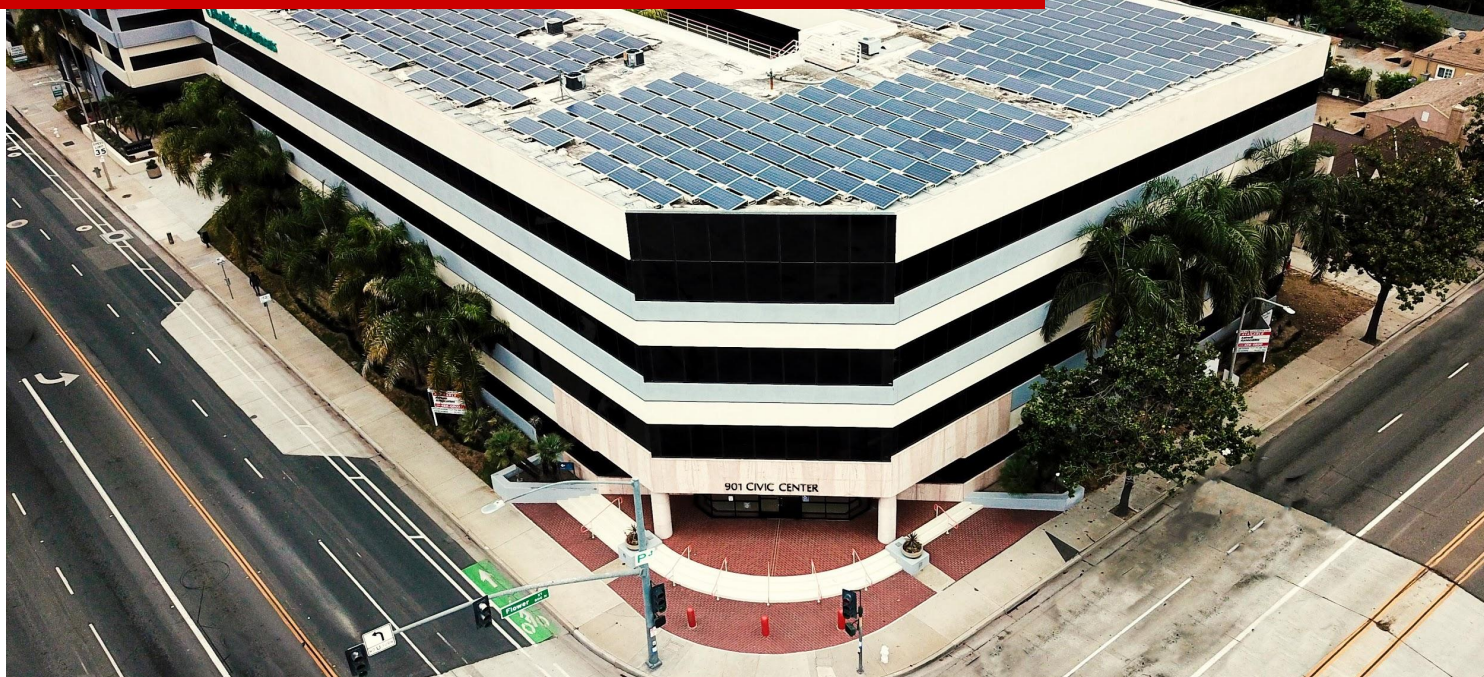


Available for Lease

901 W. Civic Center Dr. Santa Ana, CA 92703



Santa Ana Corporate Office Center Suite 170 1,341SF

Property Highlights

- Directly across from the OC Courthouse
- Ground floor coffee/deli amenities
- Secure and covered parking garage
- Direct access from parking to structure
- Remodeled suites
- First floor space
- Flexible lease terms available
- Tranquil courtyard
- Ready for immediate occupancy
- Virtual tour on [YouTube](#)

Leasing contacts:

William Hugron CCIM, SIOR
(714) 356-7823
william@ashwillassociates.com
DRE# 00803524 Corp.DRE# 01291393

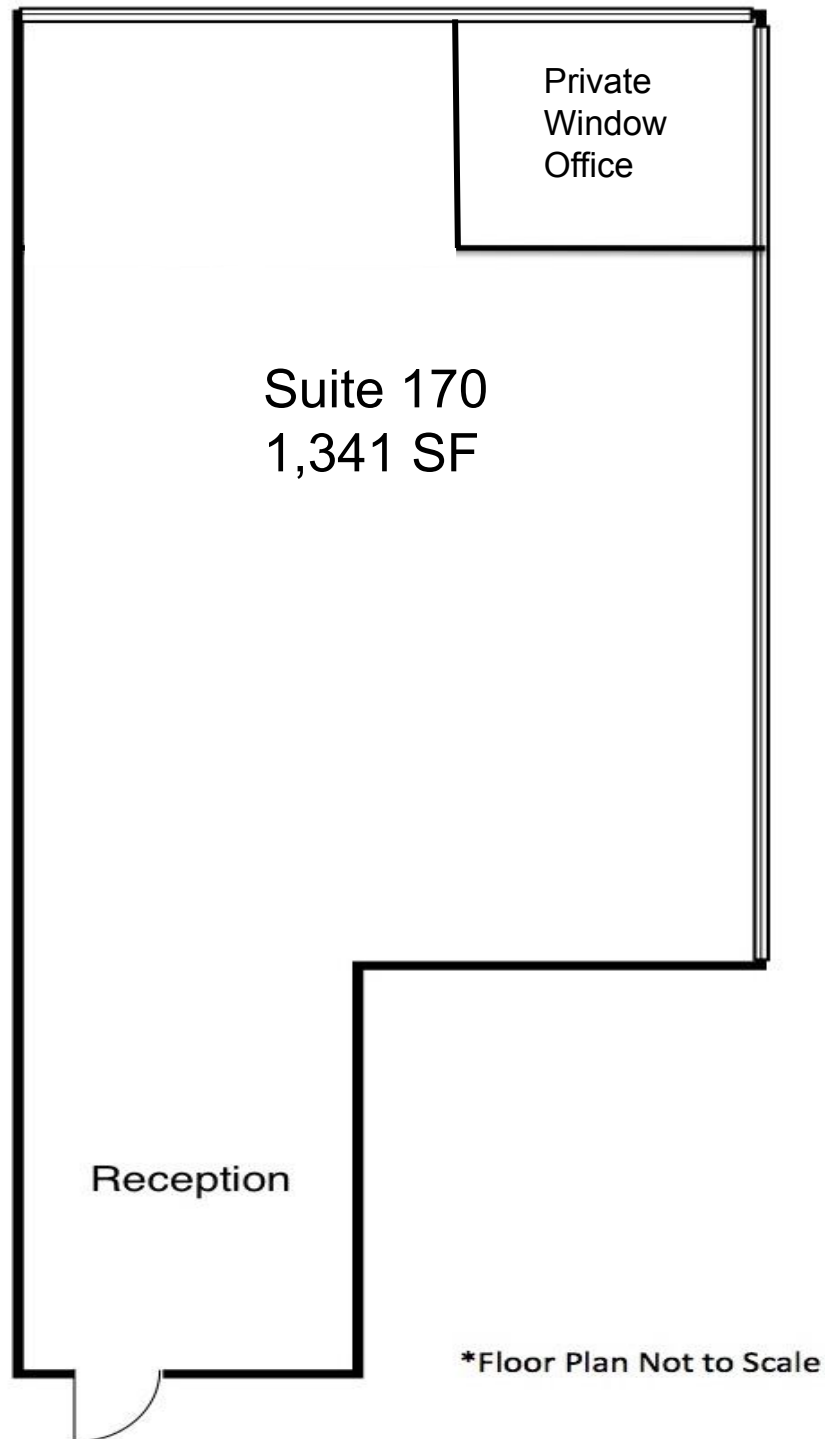
Justin Hugron
(714) 642-7690
justin@ashwillassociates.com
DRE# 02069980 Corp.DRE# 01291393



**Ashwill
Associates**
COMMERCIAL REAL ESTATE

Suites 170 Floor Plan

1,341 SF - Ready for immediate occupancy

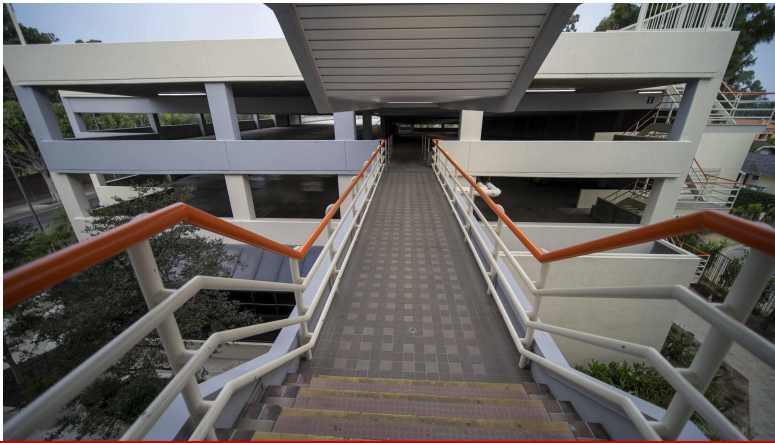


Suite 170: 1,341 SF - reception, open work space, private window office

Suite Photos



Building Photos



For more info, or to tour:

William Hugron CCIM, SIOR

(714) 356-7823

william@ashwillassociates.com

DRE# 00803524

Corp.DRE# 01291393

Justin Hugron

(714) 642-7690

justin@ashwillassociates.com

DRE# 02069980

Corp.DRE# 01291393



**Ashwill
Associates**
COMMERCIAL REAL ESTATE