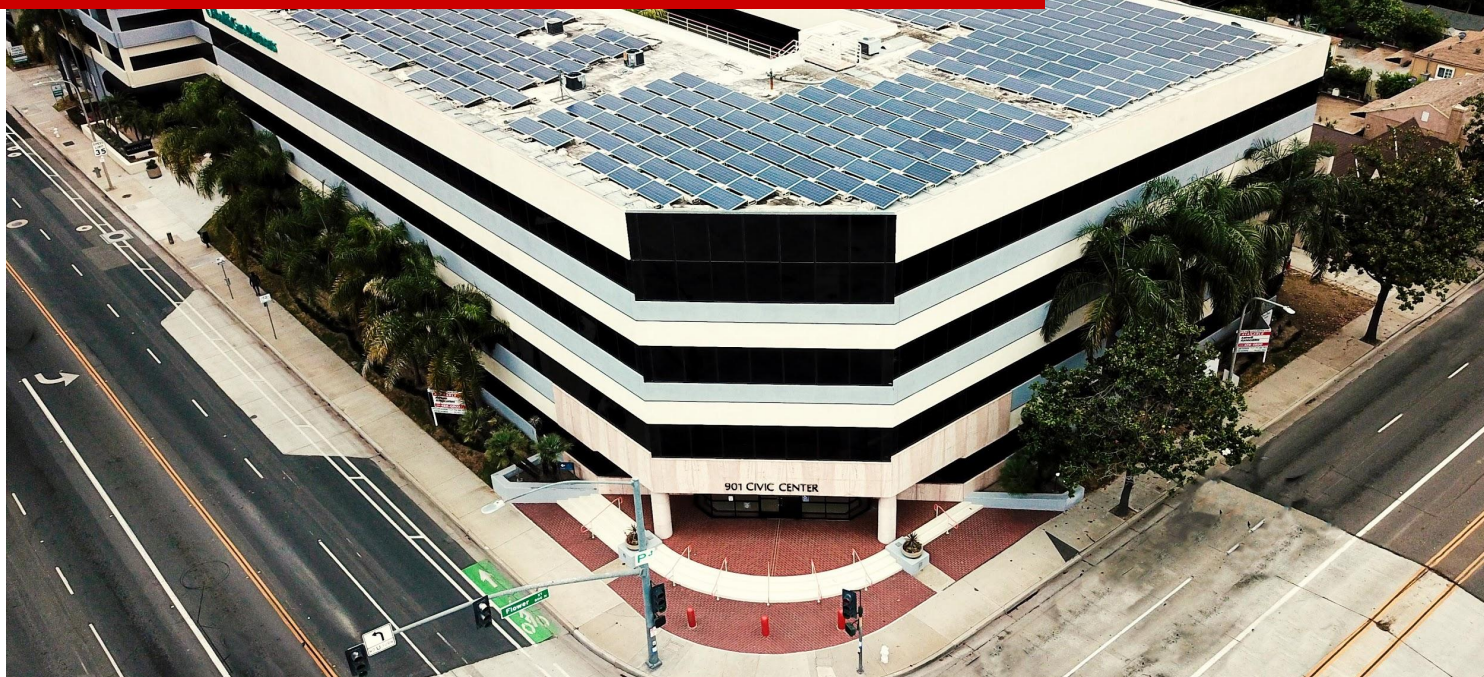


# Available for Lease

901 W. Civic Center Dr. Santa Ana, CA 92703



## Santa Ana Corporate Office Center Suite 330 - 4,717SF

### Property Highlights

- Directly across from the OC Courthouse
- Ground floor coffee/deli amenities
- Secure and covered parking garage
- Direct access from parking to each floor
- Highly improved office building
- Elevator served
- Flexible lease terms available
- Tranquil courtyard
- Ready for immediate occupancy
- Ground floor suites available
- Virtual tour on [YouTube](#)

### Leasing contacts:

William Hugron CCIM, SIOR  
(714) 356-7823  
[william@ashwillassociates.com](mailto:william@ashwillassociates.com)  
DRE# 00803524 Corp.DRE# 01291393

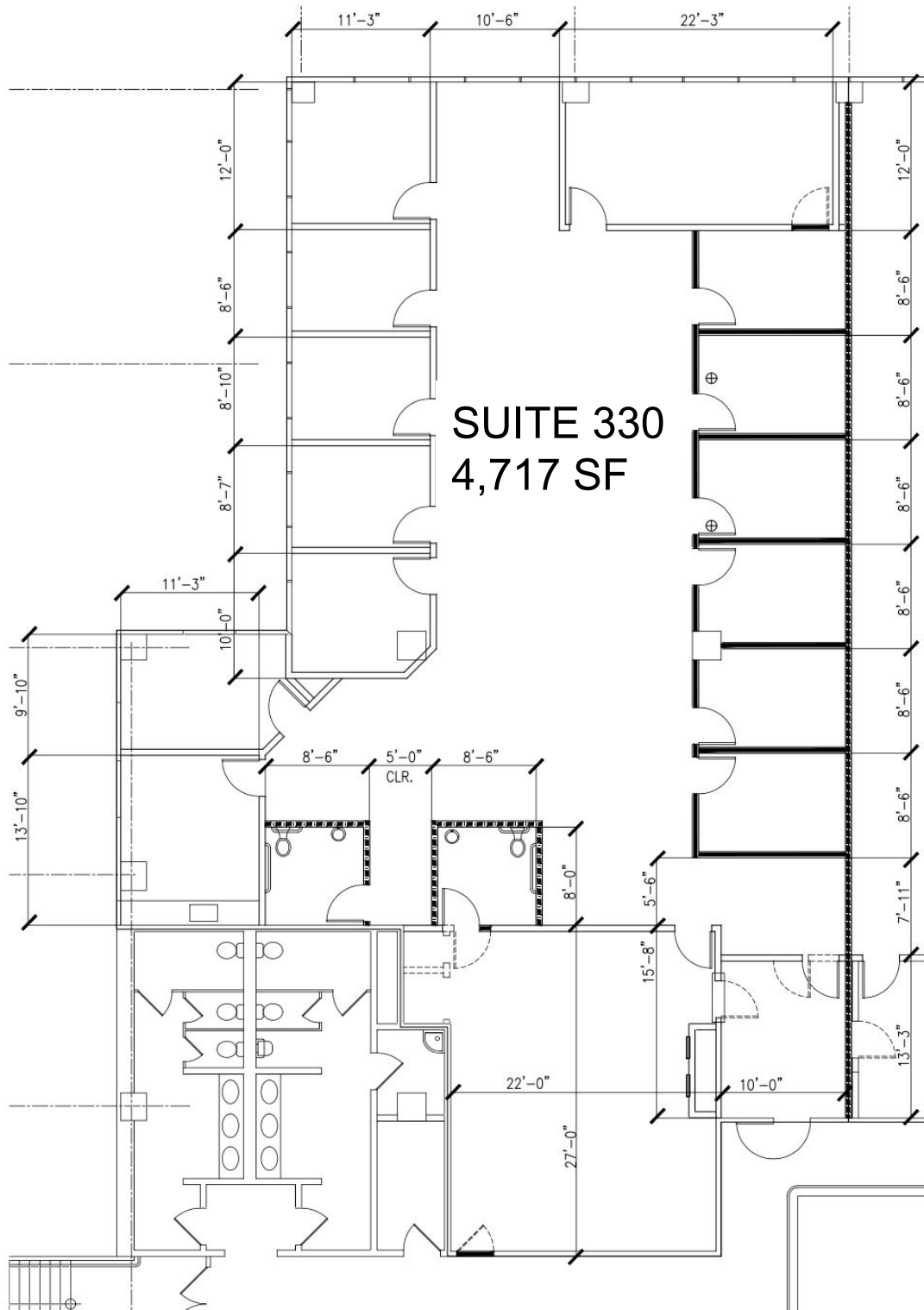
Justin Hugron  
(714) 642-7690  
[justin@ashwillassociates.com](mailto:justin@ashwillassociates.com)  
DRE# 00803524 Corp.DRE# 01291393



**Ashwill  
Associates**  
COMMERCIAL REAL ESTATE

# Suite 330 Floor Plan

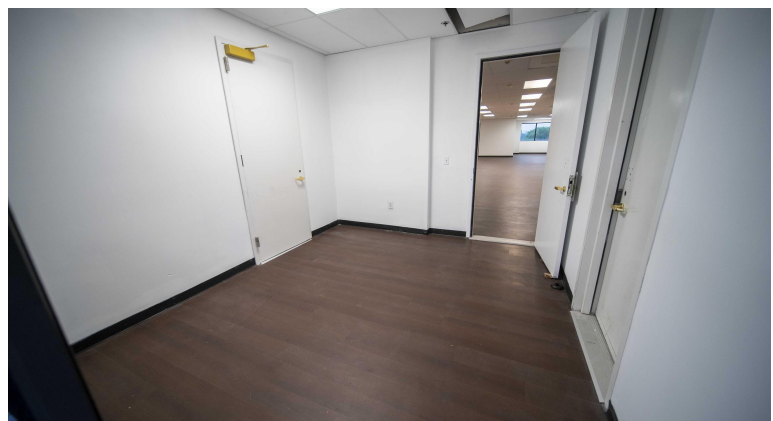
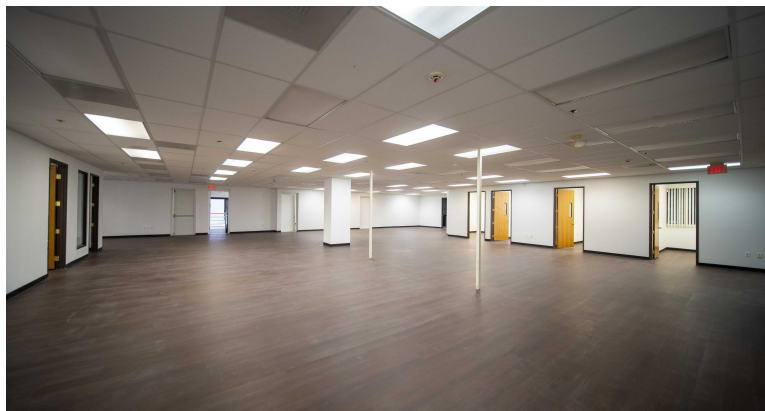
4,717 SF Ready for immediate occupancy



Featuring reception, 12 private window offices, conference room, training room, kitchen/break room, large open work space, storage room, IT room.

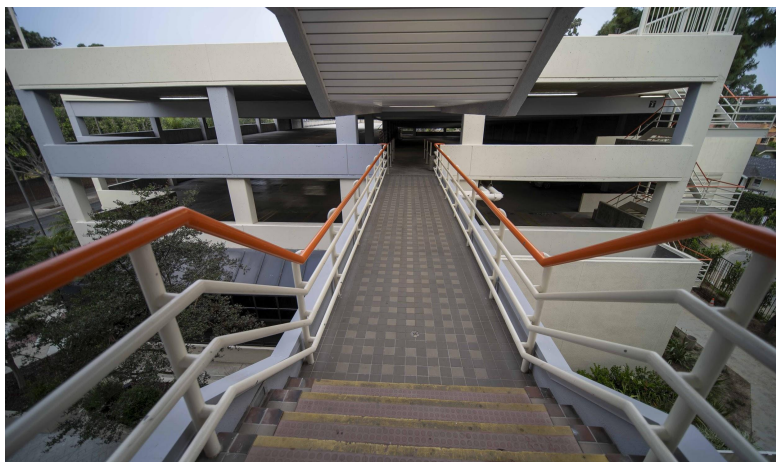


# Suite Photos





# Building Photos



**For more info, or to tour:**

William Hugron CCIM, SIOR

(714) 356-7823

[william@ashwillassociates.com](mailto:william@ashwillassociates.com)

DRE# 00803524

Corp.DRE# 01291393

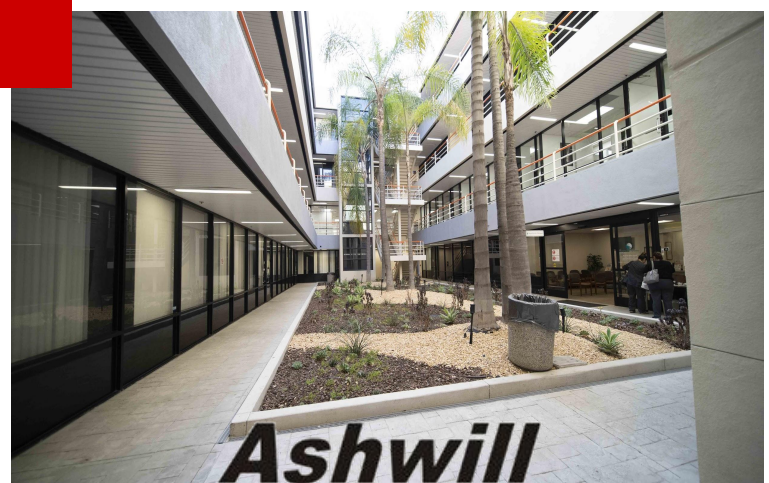
Justin Hugron

(714) 642-7690

[justin@ashwillassociates.com](mailto:justin@ashwillassociates.com)

DRE# 02069980

Corp.DRE# 01291393



**Ashwill  
Associates**  
COMMERCIAL REAL ESTATE